



2023 "Electrify and Save Program" Residential Energy Efficiency Incentives*

* Rebates subject to change. Consult us before your purchase. Applications MUST be submitted within 30 days of qualifying product purchase. Last revised 1/25/23

HVAC Equipment	Specifications	Rebate Incentive
<ul style="list-style-type: none"> Air-Source Heat Pump (Note: All air-source heat pump incentives are based on the total "size" of the heat-pump system's outdoor unit(s), specifically the coil capacity in tons. Indoor units impact system efficiency ratings.) 	<ul style="list-style-type: none"> Standard air-source heat pumps <ul style="list-style-type: none"> - HSPF \geq 9.0 and SEER \geq 15 - or HSPF2 \geq 7.8 and SEER2 \geq 15.2 Climate certified heat pumps <ul style="list-style-type: none"> - HSPF \geq 10.0 and SEER \geq 16 - or HSPF2 \geq 8.1 and SEER2 \geq 15.2 - Variable speed compressor or a minimum of 3 stages (fan speed) 	<ul style="list-style-type: none"> Standard air-source heat pumps <ul style="list-style-type: none"> - \$675 for 2 tons or less - \$1,800 for systems greater than 2 tons Cold climate certified heat pumps <ul style="list-style-type: none"> - \$1,000 for 2 tons or less - \$2,400 for systems greater than 2 tons The above rebates are capped at 50% of equipment cost
<ul style="list-style-type: none"> Air-to-Water Source Heat Pump 	Reviewed on case-by-case basis	Same tier structure as air-source heat pumps
<ul style="list-style-type: none"> Ground-Source Heat Pump 	New and replacement ground-source heat pumps with closed-loop or open-loop water source	<ul style="list-style-type: none"> \$500/ton for new systems \$250/ton for replacement systems
<ul style="list-style-type: none"> Split-System Air Conditioners (Energy Star® Rated) 	<ul style="list-style-type: none"> Units 1 ton or greater Minimum 16 SEER or 15.2 SEER2 Window units do not qualify 	<ul style="list-style-type: none"> \$100/unit
<ul style="list-style-type: none"> Evaporative Coolers 	<ul style="list-style-type: none"> Minimum 2,500 CFM No window or portable units 	<ul style="list-style-type: none"> \$200/unit, limit of 2
<ul style="list-style-type: none"> Smart Thermostats 	Standard and line voltage	<ul style="list-style-type: none"> \$25/standard thermostats, limit of 2 \$25/line voltage thermostats, limit of 5

DISCLAIMER

The "Electrify and Save Program" is administered in conjunction with Tri-State Generation and Transmission Association, Inc. ("Tri-State"). The undersigned applicant, by electing to participate in the Electrify and Save Program, and in consideration of such participation, accepts and agrees to the following terms and conditions:

- Tri-State makes no representation or warranty whatsoever regarding any product installation or service in connection with the Electrify and Save Program, including without limitation, installation services or workmanship of vendors installing products or providing services in connection with the program, performance of installed equipment or products qualifying for rebates, and energy savings derived from participation in the Electrify and Save Program.
- Applicant does hereby RELEASE, WAIVE, DISCHARGE, AND COVENANT NOT TO SUE Tri-State and officers, agents, and employees (hereinafter referred to as "Releasees") from any and all liability, claims, demands, actions, and causes of action whatsoever arising out of or related to any loss, damage or injury, including death, that may be sustained by you, or any of the property belonging to you, whether caused by the negligence of the Releasees, or otherwise, in any way arising from participation in the Electrify and Save Program.

DISCLAIMER (cont'd)

3. Applicant understands that it is participating in the Electrify and Save Program at its own risk, and that it is Applicant's responsibility to independently research the products and services covered by the program, and to further exercise care and diligence in selecting vendors and installation contractors.

4. Tri-State's review of rebate applications for the Electrify and Save Program may subject Tri-State to certain requirements of the Colorado Consumer Privacy Act (CRS § 6-1-1301, et. seq.). Tri-State's collection of data for the Electrify and Save Program is limited to data provided on rebate applications, or otherwise provided for rebate qualification, and is used for the sole purpose of evaluating compliance with the requirements of the Electrify and Save Program. Tri-State will not share applicant data with third parties other than with the applicable Member System in connection with the administration of the Electrify and Save Program; or otherwise as may be required by law or governmental regulation. Questions regarding Tri-State's use of applicant data may be directed to eeprerebates@tristategt.org.

HVAC EQUIPMENT – EVAPORATIVE COOLERS

**** Rebate applications MUST be submitted within 30 days of qualifying product purchase. ****

An evaporative cooler is a device that cools through the evaporation of water via integrated water media pad(s) and a fan. For any interpretation on the qualification of an evaporative cooler, contact Continental Divide.

- \$200, per unit
- Limit of two (2) units, per Continental Divide account
- Minimum 2,500 CFM (cubic feet, per minute)
- Replacement and new installations qualify
- Window and portable units **do not** qualify for this rebate.
- Provide the information below and submit it, along with a copy of your receipt.
- Electronic order confirmations are not acceptable without clear indication of payment made/received

Attach copy of invoice and documentation that shows equipment cost, manufacturer, model number and any documentation that confirms the CFM of the evaporative cooling unit. Sales tax and labor costs are not rebate-eligible.

HVAC EQUIPMENT – SMART THERMOSTATS

**** Rebate applications MUST be submitted within 30 days of qualifying product purchase. ****

- \$25, per smart thermostat
- Limit of two (2) thermostats, per Continental Divide account – except for line voltage thermostats
- Limit of five (5) line voltage thermostats, per Continental Divide account
- Provide the information below and submit it, along with a copy of your receipt.
- Electronic order confirmations are not acceptable without clear indication of payment made/received.

Attach copy of invoice and documentation that shows equipment cost, manufacturer and model number of smart thermostat. If receipt does not list this information, attach other proof, such as a photo of the unit's nameplate or other documentation included with equipment. Sales tax and labor costs are not rebate-eligible.

Hand-deliver to: Continental Divide's Grants or Gallup office

Mail to: Continental Divide Electric Cooperative, Inc.
ATTN: Member Services
P.O. Box 1087
Grants, NM 87020

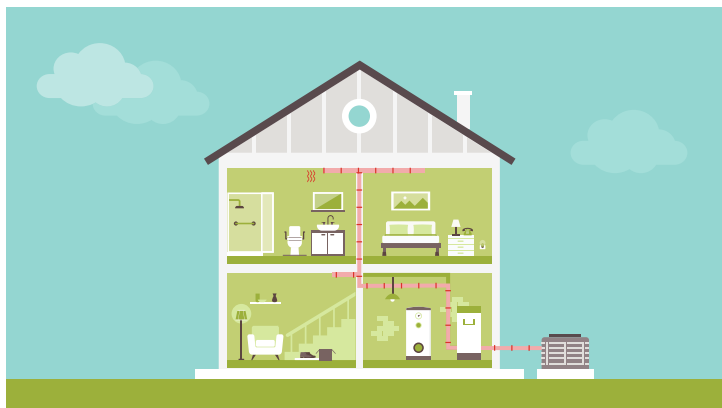
Fax to: (505) 287-2234
Email to: memberservices@cdec.coop

HVAC EQUIPMENT – HEAT PUMPS



HOW DO HEAT PUMPS WORK?

As the name implies, heat pumps transfer heat energy between inside and outside spaces, heating or cooling as desired. So, in the winter they move heat indoors and in the summer they move heat outside. Heat pumps eliminate the need to have two separate systems to perform heating and cooling, and a properly maintained, high-quality heat pump will last at least 15-20 years. Both ducted and ductless heat pumps provide efficient HVAC solutions for new homes and additions, renovations, adding air conditioning (AC), or consolidating your current HVAC system.



DUCTED AIR-SOURCE HEAT PUMPS

- + One system to heat and cool your home
- + Good airflow exchange, filtration and humidity control
- + Whisper-quiet operation

Ducted air source heat pumps are central systems that heat and cool using your existing ductwork, and can potentially replace your HVAC and furnace in one system. This enables homeowners to heat and cool their home using the same unit. Ducted equipment looks similar to a residential air conditioner on the outside and the inside air handler is similar in size to a conventional furnace.



DUCTLESS AIR-SOURCE HEAT PUMPS

- + Perfect for new homes and additions, renovations or adding AC
- + Control temperature for individual rooms
- + Flexible placement

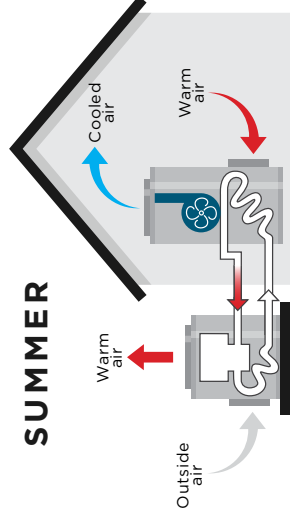
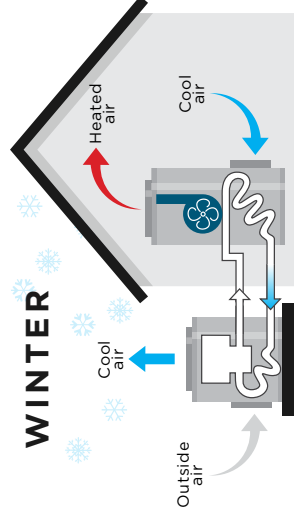
Ductless heat pumps, also known as mini-splits, are an air source heat pump system that consists of two units—an indoor air handler connected to a slim outdoor condenser through a small opening in the wall or ceiling behind it. This means that mini-splits don't require ductwork, which saves homeowners space and gives them flexibility in placement.

Mini-splits are perfect for new homes, renovations, home additions, or adding air conditioning. They also control the temperature for an individual room, making heating and cooling more efficient while maintaining comfort.

air-source HEAT PUMP

*Energy-efficient, cost-effective,
and reliable year-round*

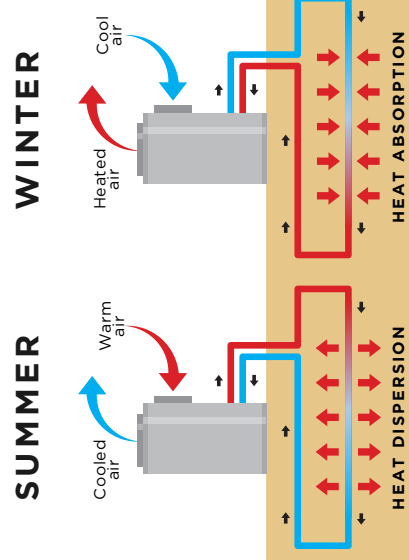
- **Pulls heat** indoors from the outdoor air in the winter and from indoor air in the summer
- When properly installed, requires **little maintenance** and delivers 1.5-3.5 times the energy it uses
- **Easy to convert** from propane or oil system
- More **efficient** than gas
- **Dehumidify better** than standard central air conditioners, resulting in **less energy usage** and more cooling in summer months



ground-source HEAT PUMP

New home construction

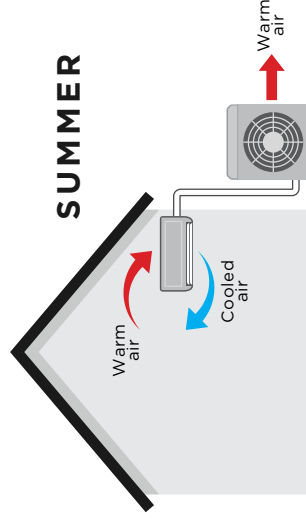
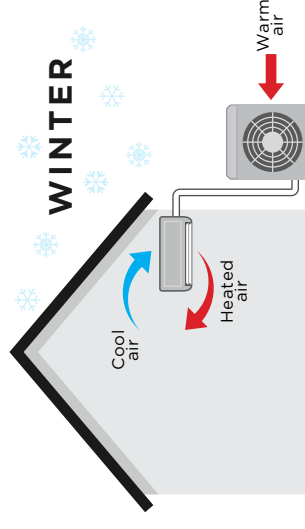
- **One system** for heating, cooling, and water heating
- Uses the abundant, **natural energy** the earth stores beneath us
- **Highest efficiency**, documenting heating efficiencies of up to **500%**, meaning homeowners get \$5 of heating for every dollar they spend
- Excess heat energy can be routed to the water heater, **saving** homeowners **two-thirds** of their water heating costs year-round
- Higher installation costs than standard forced-air furnace and central air conditioner, but **shorter payback periods** because of increased operating efficiency



mini-split/ductless HEAT PUMP

Ideal for home renovation

- Like an air-source heat pump, but **smaller**
- **Ductless**, so works on houses that don't have duct work
- **Cost effective and easy to install**
- Only runs when and as hard as it needs to, thus is **extremely energy efficient**
- Scalable so one outdoor compressor can **run multiple units** inside
- Ideal for those who want **air conditioning** in homes that don't currently have it



HVAC EQUIPMENT – AIR SOURCE and AIR-TO-WATER HEAT PUMPS

**** Rebate applications MUST be submitted within 30 days of qualifying product purchase. ****

- All air-source heat pump incentives are based on the total "size" of the heat-pump system's outdoor unit(s), specifically the coil capacity in tons. While the indoor unit(s) impact the system efficiency ratings, **indoor exchange unit capacities are not to be included in the total system size.**
- Standard air-source heat pumps must have a minimum 9.0 HSPF or 7.8 HSPF2 ratio and minimum 15 SEER or 15.2 SEER2 ratio. Rebate is \$675 for systems 2 tons, or less; \$1,800 for systems greater than 2 tons.*
- A cold-climate certified heat pump must have a minimum 10.0 HSPF or 8.1 HSPF2 and 16 SEER or 15.2 SEER2 ratio. Rebate is \$1,000 for systems 2 tons, or less; \$2,400 for systems greater than 2 tons.
- Air-to-water source heat pump units will be reviewed on a case-by-case basis. Rebate structure is the same as air-source heat pump equipment. Call us for a review.
- All rebates are not to exceed 50% of equipment cost. Equipment **does not** have to be Energy-Star rated.
- Accounts may be eligible for more than one (1) rebate depending on project scope or building type and will be handled on a case-by-case basis. Call us to review.
- It is your responsibility to work with a contractor to ensure the equipment qualifies.

* HSPF and HSPF2 is an industry performance indicator of heating performance for heat pumps based on the matched set of indoor and outdoor equipment. SEER and SEER2 is an indicator of cooling performance for air conditioners and heat pumps based on the matched set of indoor and outdoor equipment.

CDEC Accountholder Name:

CDEC Account Number:

CDEC Account Street Address, Mailing Address and Telephone Number:

1 . Is this heat pump a **new** installation or **replacement** of an existing heat pump?

– If this is a replacement, is it replacing an existing **electric air-source** or **ground-source** heat pump?

– If this is a replacement heat pump and it not replacing an existing electric heat pump, is it replacing an existing **natural gas** or **propane** heat pump?

Attach copy of invoice that shows equipment cost, manufacturer and model number **and** a copy of the AHRI certification confirming size and ratios. Certificate can be found online or from contractor. Sales tax and any labor costs are not rebate-eligible.

Hand-deliver to: Continental Divide's Grants or Gallup office

Mail to: Continental Divide Electric Cooperative, Inc.
ATTN: Member Services
P.O. Box 1087
Grants, NM 87020

Fax to: (505) 287-2234 or **Email to:** memberservices@cdec.coop

HVAC EQUIPMENT – GROUND-SOURCE HEAT PUMPS

**** Rebate applications MUST be submitted within 30 days of qualifying product purchase. ****

- All ground-source heat pump incentives are based on the total "size" of the heat-pump system's outdoor unit(s), specifically the coil capacity in tons. While the indoor unit(s) impact the system efficiency ratings, **indoor exchange unit capacities are not to be included in the total system size.**
- Rebate is \$500, per ton, for new systems; \$250, per ton for replacement systems.
- Additional \$100 for a desuperheater (an optional heat transfer device for domestic water heating from a ground-source heat pump). Back-up and/or hot water storage tanks associated with a desuperheater are not eligible for additional rebates.
- All rebates are not to exceed 50% of equipment cost. Equipment **does not** have to be Energy-Star rated, but AHRI certification **must** accompany application to verify EER and COP ratios.*
- Accounts may be eligible for more than one (1) rebate depending on project scope or building type and will be handled on a case-by-case basis. Call us to review.
- It is your responsibility to work with a contractor to ensure the equipment qualifies.

* EER is an industry standard ratio of the cooling capacity, to the power input. COP is an industry standard ratio of useful heating or cooling provided, to work required.

CDEC Accountholder Name:

CDEC Account Number:

CDEC Account Street Address, Mailing Address and Telephone Number:

1. Is this heat pump a **new** installation or **replacement** of an existing heat pump?

– If this is a replacement, is it replacing an existing **electric air-source** or **ground-source** heat pump?

– If this is a replacement heat pump and it not replacing an existing electric heat pump, is it replacing an existing **natural gas** or **propane** heat pump?

Attach copy of invoice that shows equipment cost, manufacturer and model number **and** a copy of the AHRI certification confirming size and ratios. Certificate can be found online or from contractor. Sales tax and any labor costs are not rebate-eligible.

Hand-deliver to: Continental Divide's Grants or Gallup office

Mail to: Continental Divide Electric Cooperative, Inc.
ATTN: Member Services
P.O. Box 1087
Grants, NM 87020

Fax to: (505) 287-2234 or **Email to:** memberservices@cdec.coop

HVAC EQUIPMENT – SPLIT-SYSTEM AIR CONDITIONERS (Energy Star® Rated)

**** Rebate applications MUST be submitted within 30 days of qualifying product purchase. ****

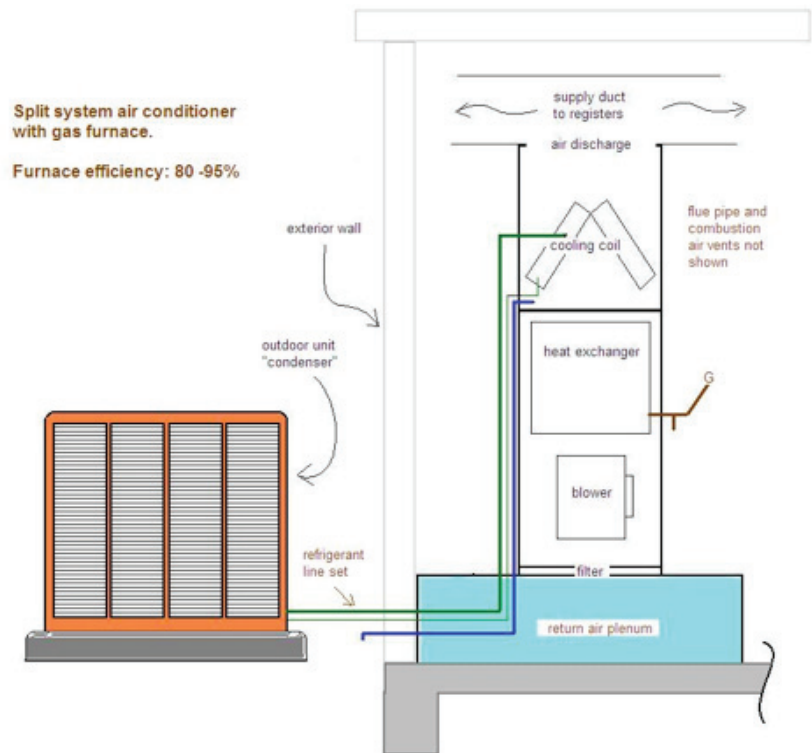
What is a split system?

Split systems are made up of an outdoor unit, which contains the condenser and compressor, and an indoor unit, which is often connected to a furnace or heat pump.

The illustration to the right is an example of a split-system air conditioner connected to a gas furnace.

To qualify for a \$100 per unit rebate, split system **must be Energy-Star rated**, a minimum of 1 ton and have a minimum 16 SEER or 15.2 SEER2 ratio*. Window units **do not** qualify for this rebate.

It is your responsibility to work with a contractor to ensure the equipment qualifies.



*SEER and SEER2 is an indicator of cooling performance for air conditioners and heat pumps based on the matched set of indoor and outdoor equipment.

CDEC Accountholder Name:

CDEC Account Number:

CDEC Account Street Address, Mailing Address and Telephone Number:

Will this unit replace a compressor **only** or **both** a compressor and coil?

Attach copy of invoice that shows equipment cost, manufacturer, model number and size **and** any documentation that confirms the SEER/SEER2 ratio and Energy-Star rating. Sales tax and any labor costs are not rebate-eligible.

Hand-deliver to: Continental Divide's Grants or Gallup office

Mail to: Continental Divide Electric Cooperative, Inc.
ATTN: Member Services
P.O. Box 1087
Grants, NM 87020

Fax to: (505) 287-2234 or **Email to:** memberservices@cdec.coop